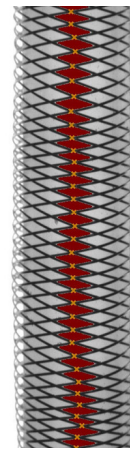
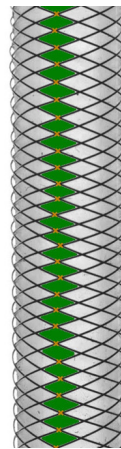


In-line Braid Inspector PPI Count Verification for Braided Products



- The braid inspector (BX1100) is a professional measurer of braid density, also known as pick count or picks per inch (PPI) for braided catheters, medical catheters, stents, cables, and other braided products for quality assurance and reliable automated production.
- The braid inspector uses custom-designed lighting, digital imaging to enable real time inspection. The digital inspection images are enhanced, magnified and displayed on a monitor to visually confirm the braids, target position and see any potential errors.
- The BX1100 can be mounted inline on horizontal or vertical braiders for automatic inspection, or work offline as a tabletop unit for fast and easy inspection by the operator.



FEATURES

- Braid Inspector is designed to measure density of count picks within a desired length
- High resolution camera and custom-designed lighting system increases the accuracy of the braid inspection
- Digital images are captured and analyzed automatically by the software to give you results in real time
- Capture system can be mounted inside a horizontal or vertical braider enclosure
- Can be integrated with the braider to control production and improve your process
- Simple set-up and easily handled by operators



SPECIFICATIONS

- Maximum Speed:
 - 100 meters / minute
 - 320 feet / minute
- Minimum Product Diameter:
 - 0.5 mm
 - 0.020 inches
- Capture Station Dimensions:
 - 102 mm x 102 mm x 305 mm - L x W x H
 - 4" x 4" x 12" - L x W x H

May vary based on application
- Mount:
 - In horizontal braider
 - In vertical braider
 - In reel-to-reel system
- LCD Display: 22"
- PLC Integration:
 - Integrates with most models of PLC including Siemens and Allen Bradley
- Shaft Types:
 - Transparent
 - Multi-lumen
 - Opaque tubes
 - Polymers
 - Rigid metal mandrel
- Braid Types:
 - Metal
 - Polymer
 - Fiber
 - Single and multi wire bands
 - Flat
 - Ribbon-style wires
 - Various braid patterns
- Lighting: LED
- Power:
 - 110 VAC 50/60 Hz
 - 220 VAC 50/60 Hz

TAYMER

☎ +1 905 479 2614

✉ info@taymer.com

Send samples to:
Taymer International Inc.
208 Telson Road
Markham, ON L3R 1E6
CANADA