

SURFACE DEFECT DETECTION



› Ensure Your Product is Defect Free

The single-camera surface defect inspector (SI1100) captures, analyzes, and judges the surface of welds or flat products such as bars, tape, or profiles. The SI series is the most thorough method of detecting surface and dimensional flaws available. With Taymer's Surface Inspector, you can be sure the product going to your customers meets your high standards and is without surface defects.

› Reduced Defects

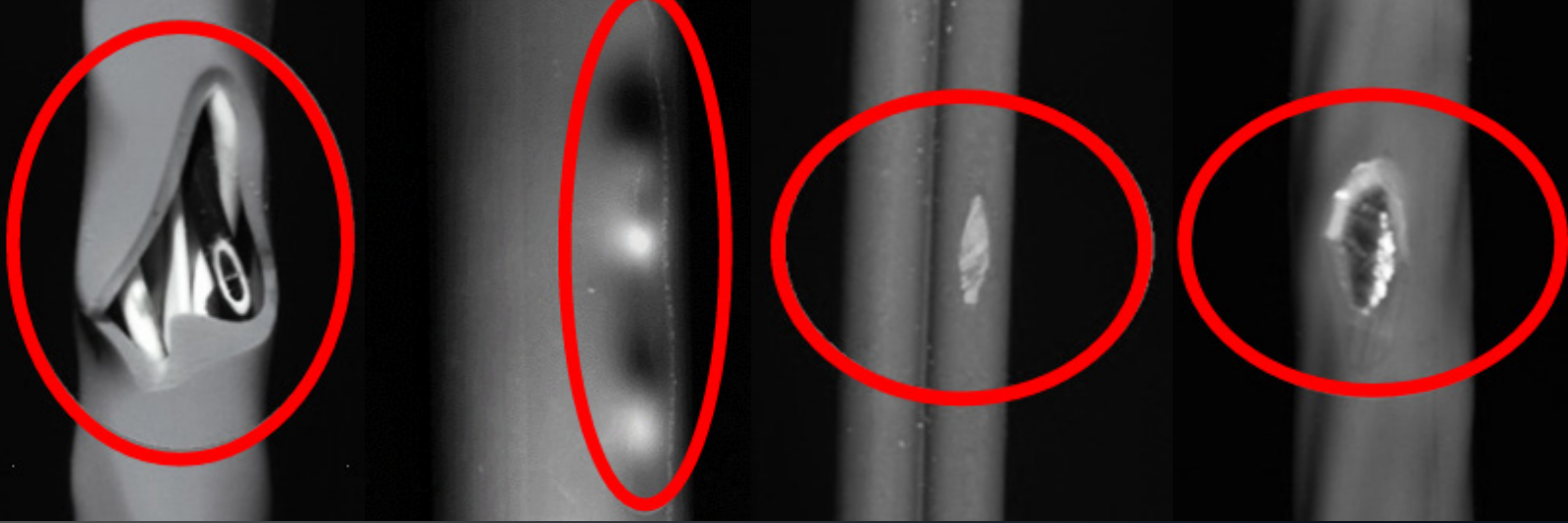
The Surface Inspector provides the operator with up-to-the-second digital image feedback of the surface quality on any production line. This continuous stream of real time information - especially the failure images - allows the operator to isolate causes of surface and dimensional imperfections. This result allows you to identify the causes of surface defects and prevents customer complaints or rejects.

› Quality Assurance

Using the surface defect detector, you can capture images of your product, save the images to disk and print them out to include in your quality reporting both internally and to your customers. The Surface Inspector's display also makes it easy for engineering and production supervisors to examine the defect. Defect locations can also be recorded, this will allow for further analysis of the defects later on.

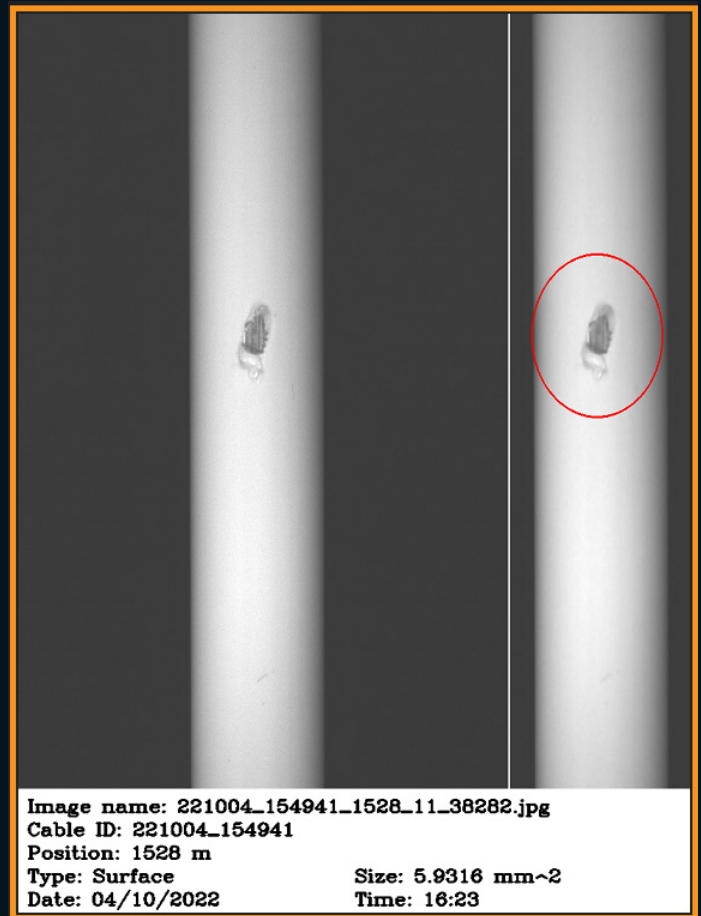
FEATURES

- › Detects pinholes, scratches, surface blemishes, discoloration, and tears
- › Software analyzes 100% of product length
- › Alerts operators and production machines of any found defects
- › Records any defects for QA records and operator verification
- › Saves length of detected defect to allow operators to locate it after detection
- › Supports line speeds up to 400 m/min



SPECIFICATIONS

- > Maximum line speed:
 - 400 m/min | 1312 ft/min
- > Cable diameter range:
 - 0.05 mm and up | 0.002" and up
- > Minimum detectable defect size:
 - 0.1 mm and up | 0.04" and up
- > Location:
 - Before the printer
- > Pixels per mm:
 - ~100 for large diameter tapes
 - ~500 for small diameter tapes
 - Up to 100,000 for metal pipes and bars
- > Image processing:
 - Images from cameras are read, enhanced and analyzed, resulting in 100% coverage at max line speed
- > Lighting: LED
- > Power supply: 110 V or 220 V



TAYMER

+1 905 479 2614

info@taymer.com

Send samples to:

Taymer International Inc.
208 Telson Road
Markham, ON L3R 1E6
CANADA